



PRESSURE TREATED TIMBER

TANALISED® E pressure treated timber can have a service life of 15 - 60 years depending on its end use.

The colour of TANALISED® E pressure treated timber slowly weathers from an initial green hue to a warm, honey brown and in the longer term to a natural silver grey.

If required the colour can be refreshed with a brush-on colour product such as RESTOL® (Tanalith® Green).

Any timber surface exposed by cross cutting, drilling, notching or boring must be brushed with ENSELE® end-grain preservative to maintain the integrity of the treatment.



As TANALISED® E pressure treated timber is a high performance product, it is appropriate to use metal fixings and fastenings that give a comparable service life. Under normal conditions the use of hot dipped galvanised nails, screws and fixings is recommended.



TANALISED® Extra pressure treated timber has a built-in water repellent property, making it ideal for outdoor leisure and decorative timbers, such as decking, cladding and playground equipment.



TANATONE® pressure treated timber has a built-in brown colouration and is ideal for fencing and landscaping applications.

For more detailed guidance on the use of TANALISED® E pressure treated timber ask for a copy of the current Code of Practice and the Consumer Information Sheet - telephone **01977 714000** or visit **www.archtp.com**

© Arch Timber Protection 2009.
© TANALISED, TANALITH, TANATONE, ENSELE and RESTOL are registered trademarks of Arch Timber Protection.
Disclaimer: Whilst every attempt has been made to ensure the accuracy and reliability of the information contained in this document, Arch Timber Protection gives no undertaking to that effect and no responsibility can be accepted for reliance on this information.



PRESSURE TREATED TIMBER

...ideal for fencing, decking, leisure wood, playground equipment and building applications.

Unique
timber protection

More than just treated timber...

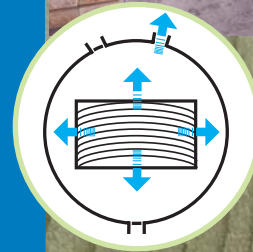
More than just treated timber...



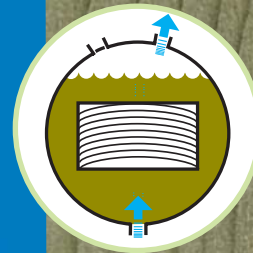
PRESSURE TREATED TIMBER

- Impregnated using proven vacuum, high pressure technology and Tanalith® E wood preservative - a modern and **UniQue** formulation.
- Long term protection against fungal decay and insect attack.
- Designed for use in both external and internal situations and for in and above ground or even fresh water contact applications.
- Appealing even green colour with excellent weathering properties - blends perfectly with outdoor environments.
- Available with a built-in water repellent (Tanalised® Extra) or brown colour additive (Tanatone®).
- Ideal for fencing, decking, leisure wood, playground equipment and building applications - Use Classes 1-4.

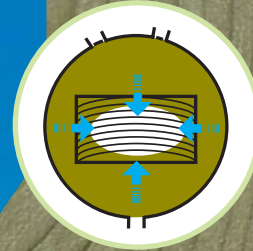
Doesn't your building or outdoor project deserve the best protection?



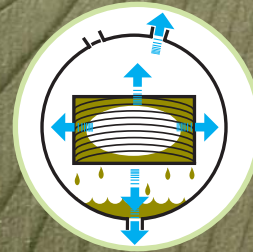
1 Timber is loaded into treatment vessel. Initial vacuum is applied - timber cells evacuated of air. Vacuum held.



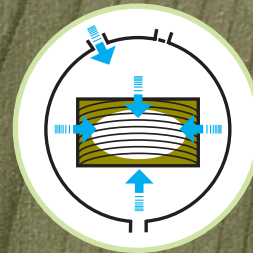
2 Cylinder is flooded under vacuum with Tanalith® E wood preservative, with Tanalith® Extra or Tanatone® additives, if required.



3 Hydraulic pressure is applied, forcing the preservative deep into the structure of the timber.



4 Final vacuum extracts excess preservative solution, which is pumped back to storage.



5 Low pressure inside the timber draws in surface solution when vented to atmosphere. Treated timber is left to dry.

The treatment process...

USE CLASSES

The eventual end use of treated timber is classified into one of the 4 main categories shown in the table below. These Use Classes, defined in BS EN 335-1, are based on the potential threat to the timber from decay or insect attack in its eventual application.

For instance, internal building timbers in Classes 1 & 2 will be under less threat than timbers used externally in ground contact - Use Class 4. Therefore, Use Class 4 timbers will require a higher degree of protection. TANALISED® E pressure treated timber can be used with total confidence in Use Classes 1 - 4.

USE CLASS SUMMARY

1	Internal, dry eg. upper floor joists
2	Internal, risk of wetting eg. tile battens
3.1	Outdoors, coated, above ground eg. cladding
3.2	Outdoors, uncoated, above ground eg. fence rails
4	Direct soil or fresh water contact eg. fence posts

